

# ISE30 / ZSE30 Quick Setup Instructions

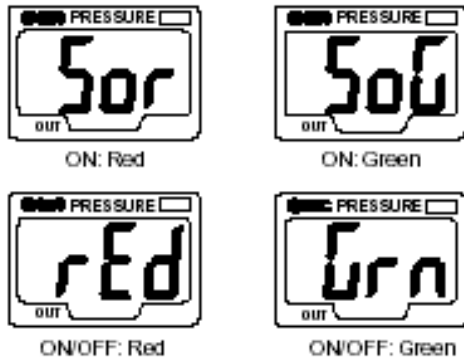
**Note:** If “M” suffix present, no unit type selection option available. – Eg; Part Number: ZSE30-T1-25-M

- 1) **Setting zero adjust**
  - a) Vent to atmosphere
  - b) Press Up and Down simultaneously to “zero” display
- 2) **Set desired display units**
  - a) Hold set button for 2+ seconds
  - b) Use up / down buttons to select from chart

Indication of units		
Displayed units	ISE30	ZSE30
Pa	0.001MPa	0.2kPa
kgf/cm <sup>2</sup>	0.01	0.002
bar	0.01	0.002
psi	0.2	0.05
mmHg	—	2
InchHg	—	0.2

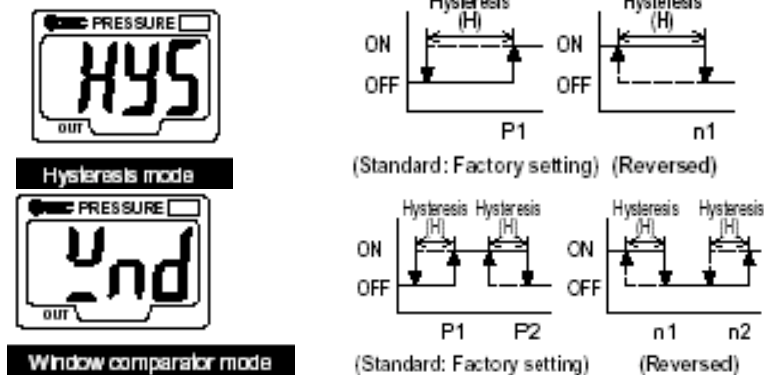
c) Press set button to proceed

- 3) **Select color for display**
  - a) Hold set button for 2+ seconds
  - b) Use up / down buttons to select color mode



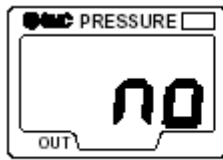
c) Press set button to proceed

- 4) **Select operating mode**

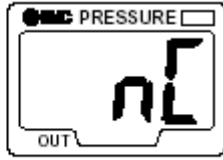


- a) Press up/down to select
- b) Press set to proceed

5) **Set normal switching output**



Normally open

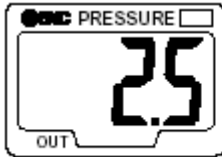


Normally closed

- a) Press up/down to select
- b) Press set to proceed

6) **Set output response time**

*Reduce chattering (sensitivity) with 5 possible settings*



2.5ms



20ms



160ms



640ms



1280ms

- a) Press up/down to select
- b) Press set to proceed

# Set ISE/ZSE30 Pressure Switch Output

